

Pinellas Trail User Count Data Summary



Automated Trail Counter Data Collection Period:
May 1st – 31st (31 days)

May 2021

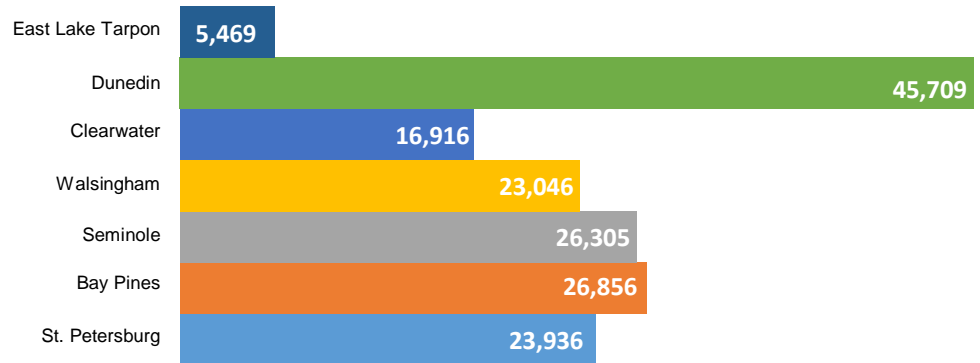
31-Day Count Total: ***168,237**

Daily Average Users: **5,427**

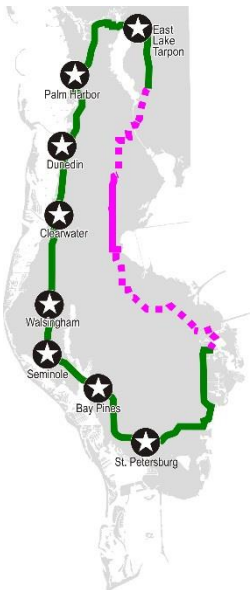
Highest Daily Totals:

- #1 – Saturday, May 9th (Dunedin – 2,350)
- #2 – Saturday, May 1st (St. Petersburg – 1,243)
- #3 – Saturday, May 22nd (Seminole - 1,223)

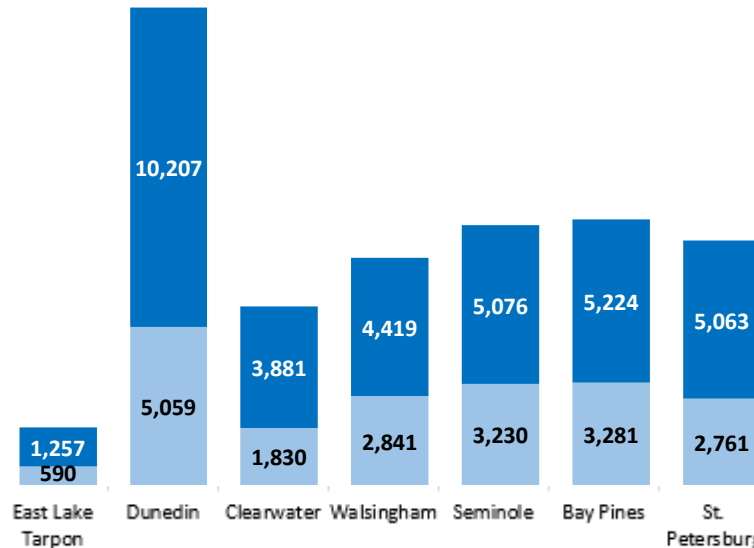
May Monthly Trail Use by Counter Location



Counter Locations



Weekday & Weekend Profile



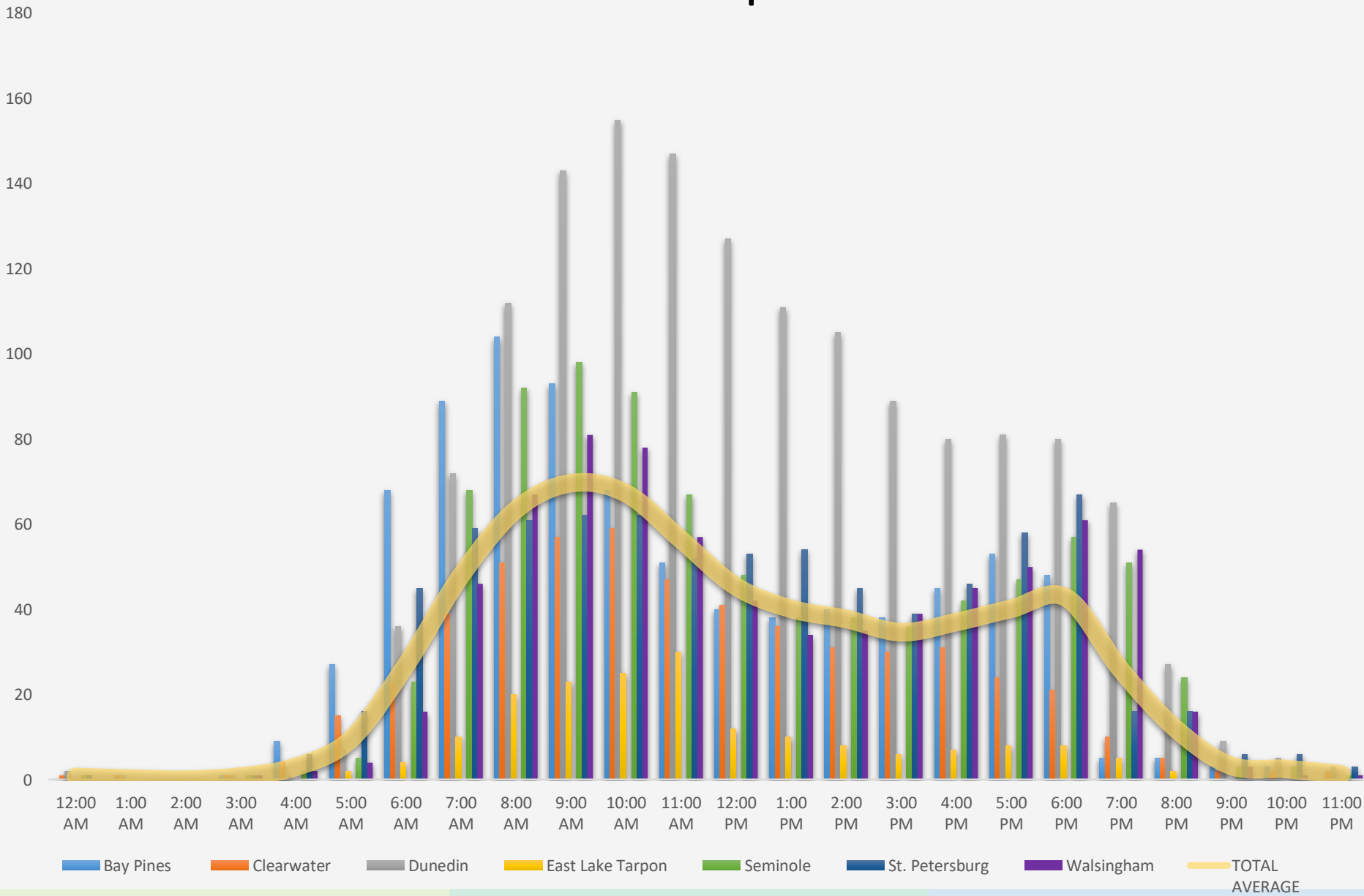
Trail User Mode Split

Counter Location	Walking (Pedestrian)	Bicycling (Bicycle)
East Lake Tarpon:	12%	88%
Dunedin:	19%	81%
Clearwater:	18%	82%
Walsingham:	23%	77%
Seminole:	29%	71%
Bay Pines:	18%	82%
St. Petersburg:	26%	74%

Source: Forward Pinellas **May 2021**
National Weather Service: [May 2020](#)

*Palm Harbor counter technical issues, no data provided.

May 2021 Average Hourly Counter Report



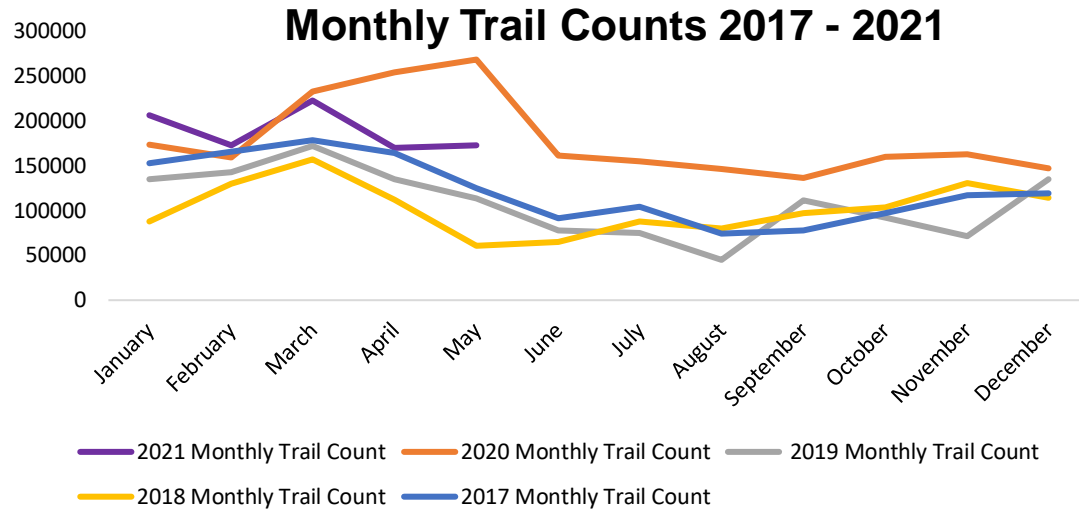
Pinellas Trail User Count Data Summary

Automated Trail Counter Data Collection

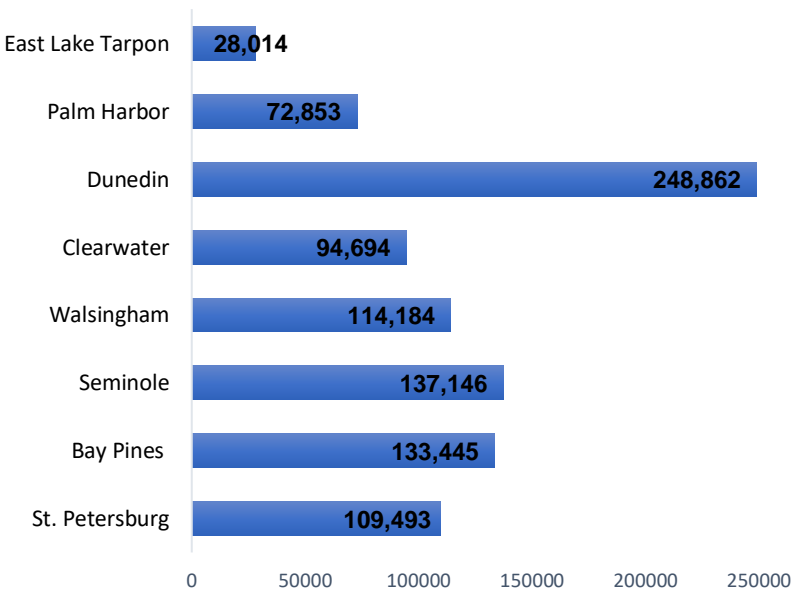
Period: January – May 2021 Data*



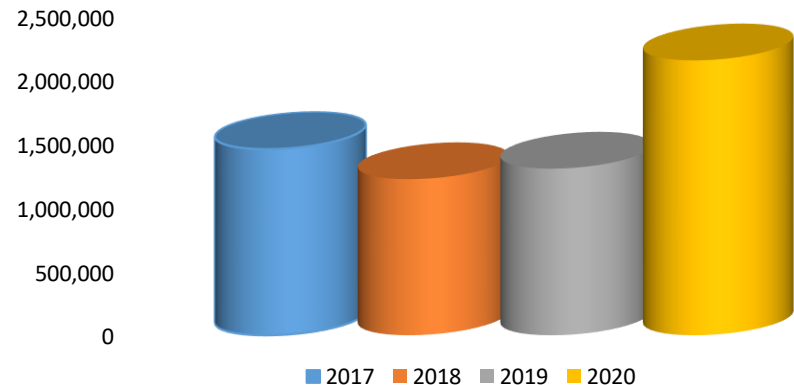
**Jan-May 2021 Total Count:
939,031**



Year to Date Data Per Location



Pinellas Trail Use 2017 – 2020



*2010 – 2016 Survey Data & 2017-2021 Counter Data. Technical issues with several counters in 2019 resulting in several missing days of data during 2019.